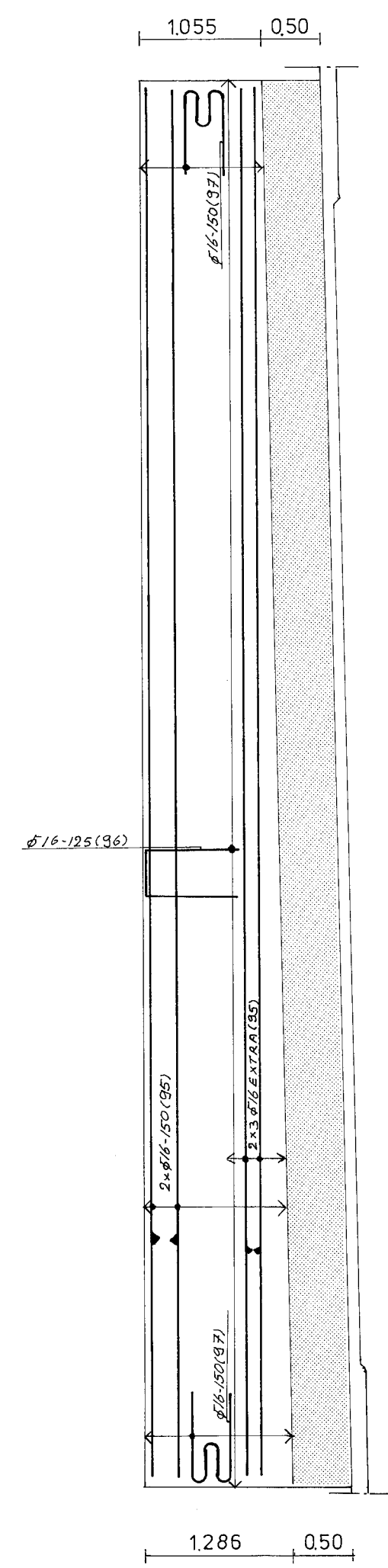
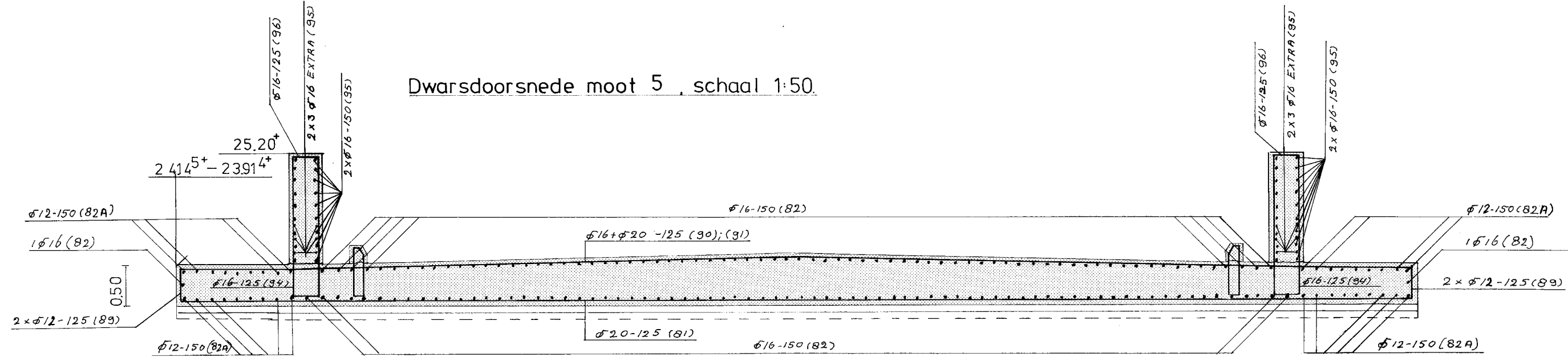


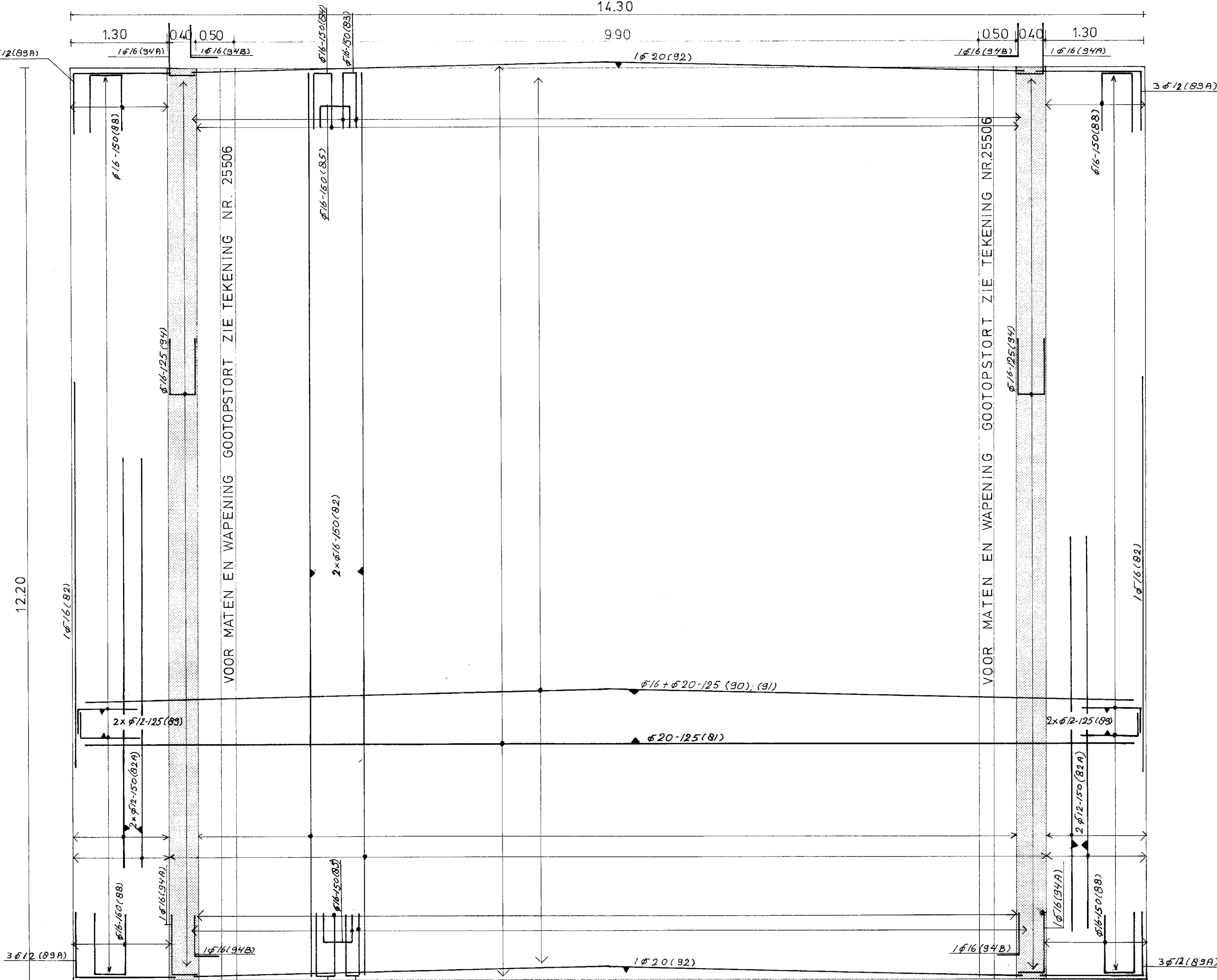
Lengtedoorsnede moot 5, schaal 1:50



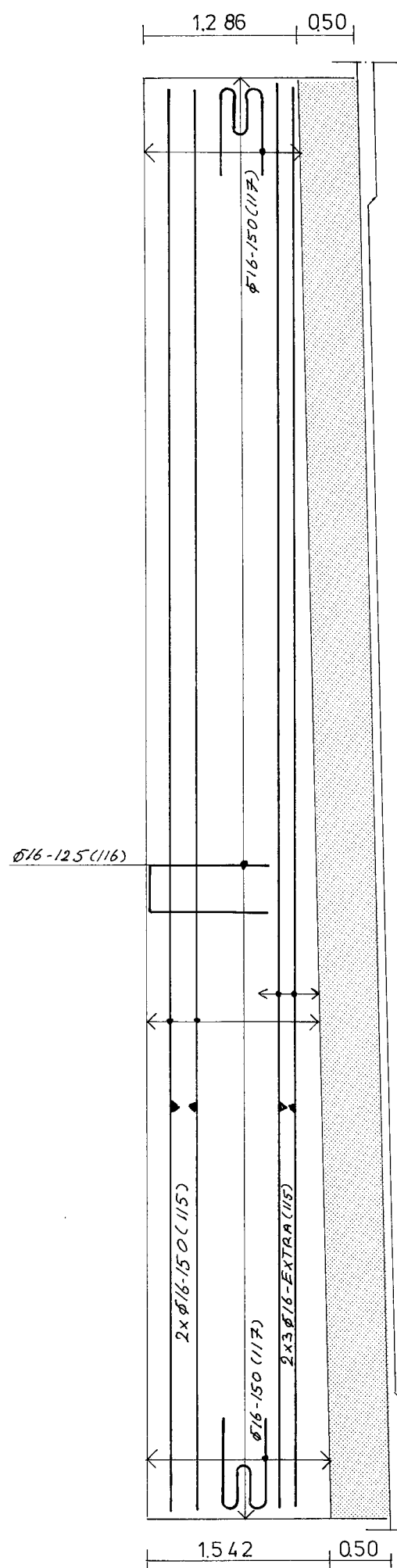
Dwarsdoorsnede moot 5, schaal 1:50



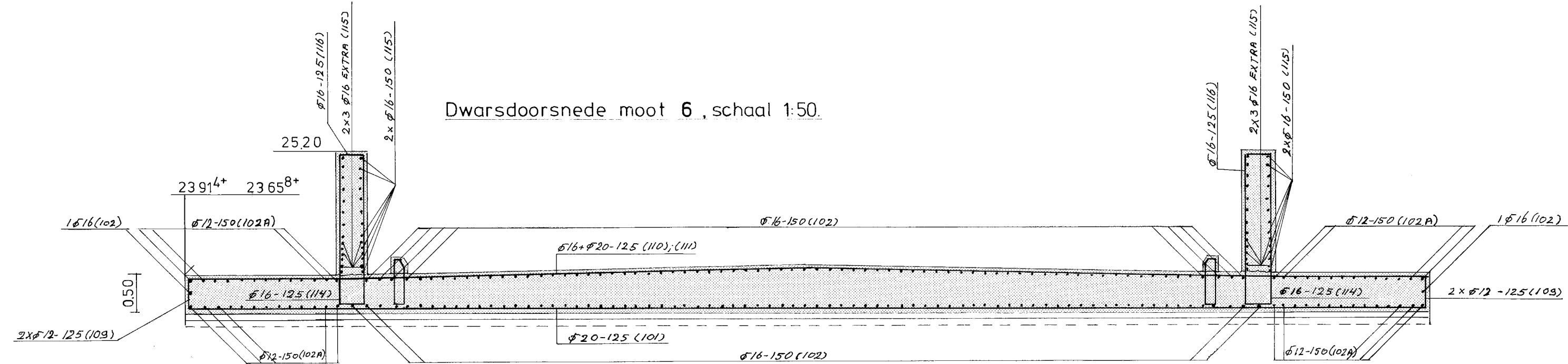
Bovenanzicht moot 5, schaal 1:50



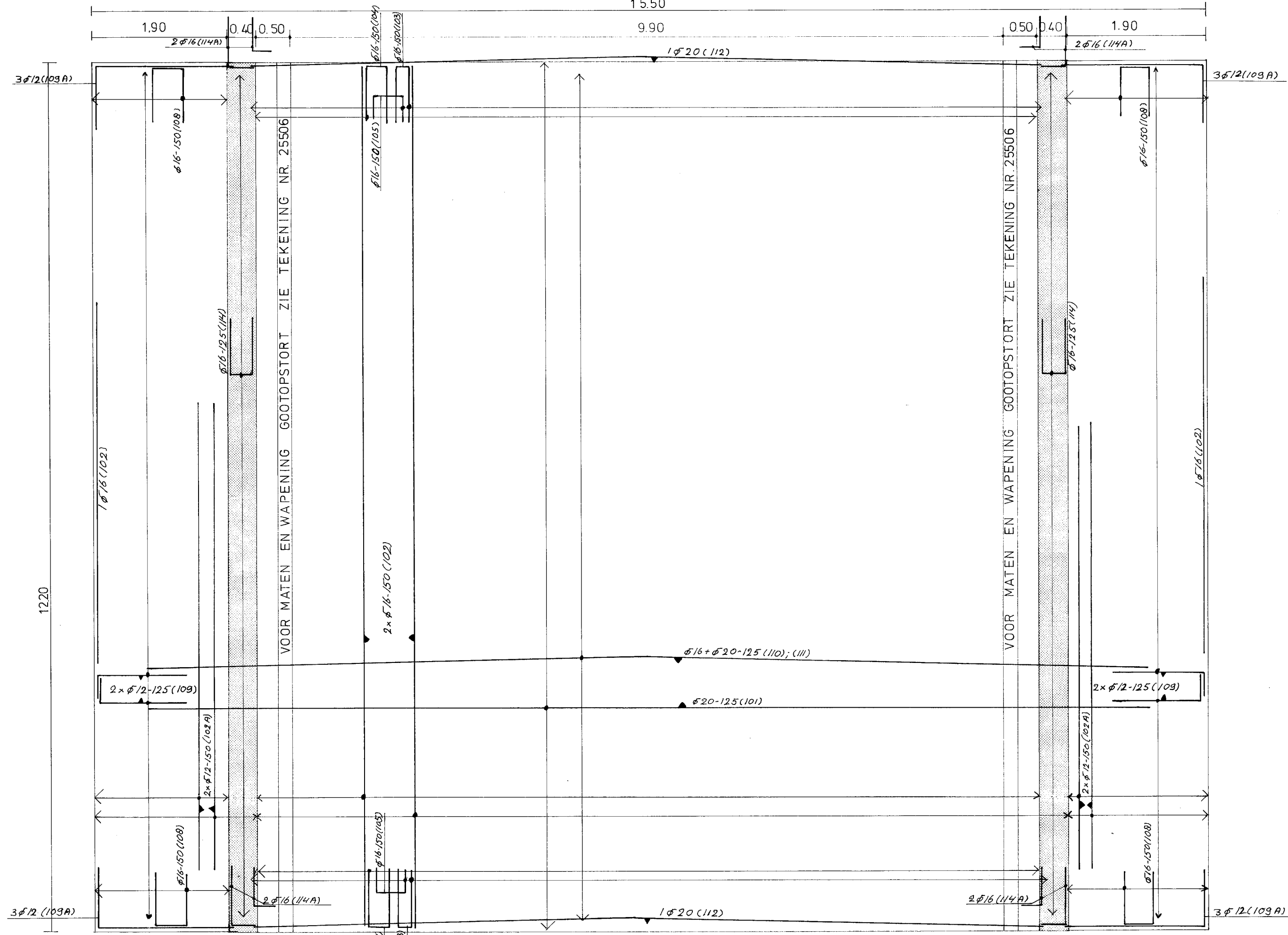
Lengtedoorsnede moot 6 schaal 1:50



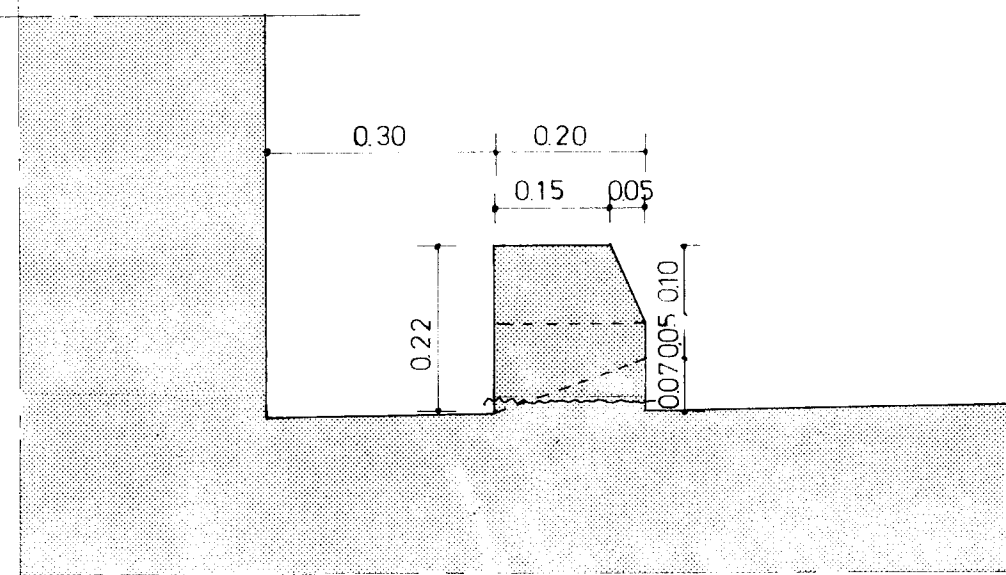
Dwarsdoorsnede moot 6, schaal 1:50



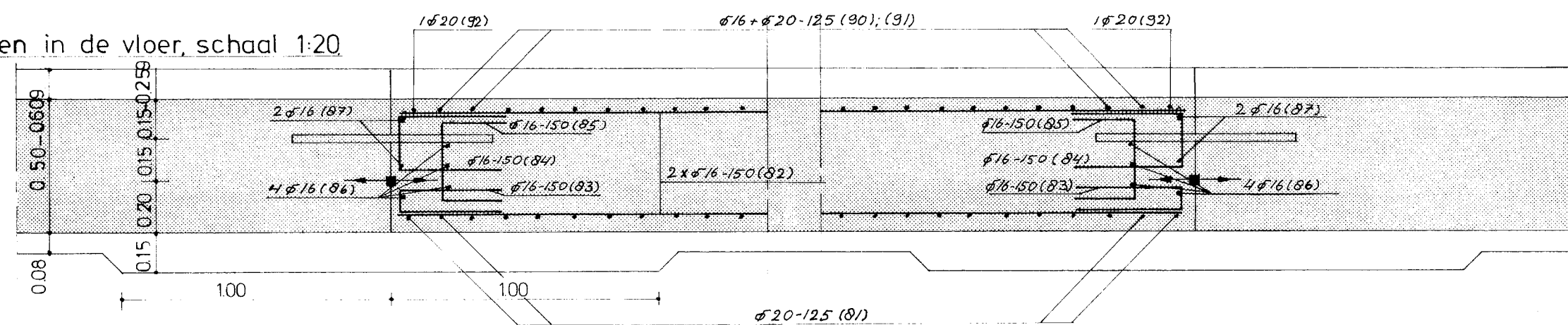
Bovenanzicht moot 6, schaal 1:50



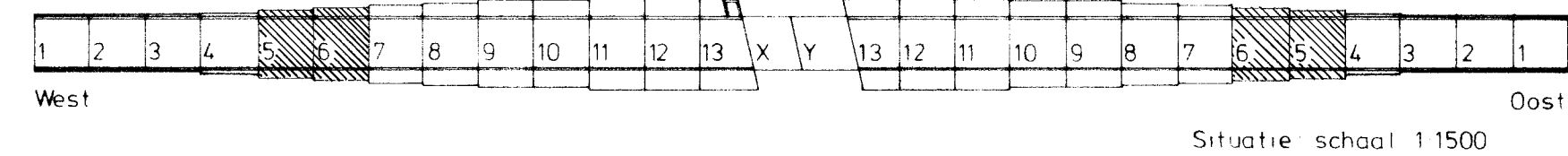
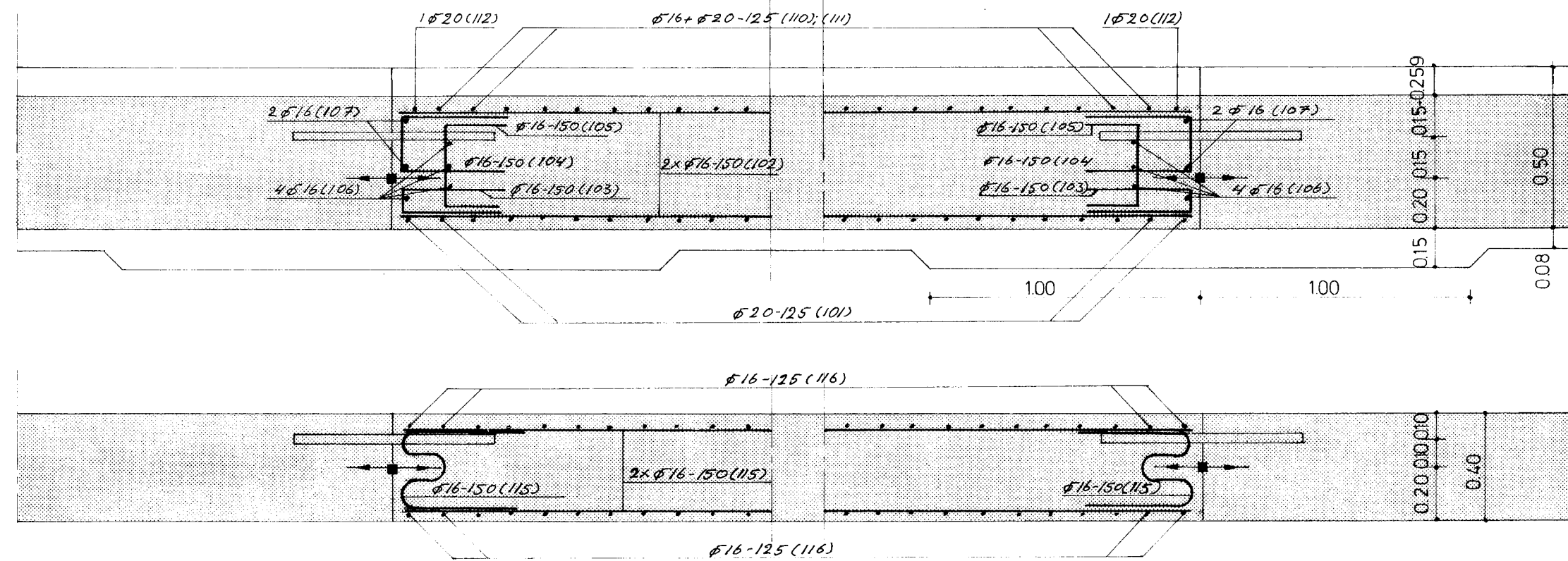
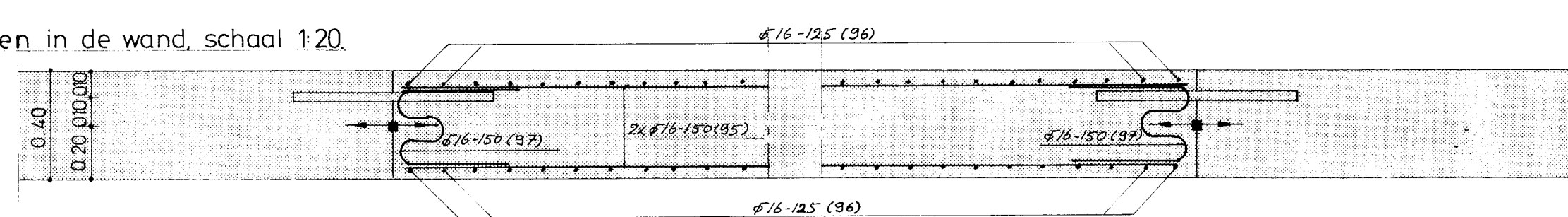
Detail goot, schaal 1:10



Details voegen in de vloer, schaal 1:20



Details voegen in de wand, schaal 1:20



Staatkwaliteit	FeB 400
Cementsoort	HC
Cementklasse	32.5
Betonkwaliteit	B 22.5
Betonklasse	II
Dekking	30 mm
X <sub>3</sub> =235 mm <sup>2</sup> voor ankisten, (dragende constructies)	
Startnaad	

Gewijzigd	Dat	Par	PROVINCIALE WATERSTAAT VAN NOORD-BRABANT	
A	1982/02	1982/02	WEG EINDHOVEN-LIMBURGSE GRENS (S 22)	
B			WEG BAKEL-DEURNE-LIMBURGSE GRENS (T 18)	
C			TUNNEL KRUISPUNT S 22-T 18 TE DEURNE	
D			MATEN EN WAPENING MOOT 5 EN 6	
E			drsn-anzichten schaal 1:50, details schaal 1:20	
F			Get <i>[Signature]</i> dd <i>[Date]</i> Werktekening	
G			Get <i>[Signature]</i> dd <i>[Date]</i> BESTEK 25P KAART 8 B 4 5 12	
H	52C-906		Get <i>[Signature]</i> dd <i>[Date]</i> DIENSTJ 1981 FORM B 6 REG 25415	